



1 W. Wyomissing Ave., Mohnton, PA 19540

May 4- May 10, 2026

www.calvaryumcmohnton.org

Office Hours- Mon.-Thur. 9-2

610-777-8441

Administrator.calvmohn@comcast.net

*Connect with God.*

*Connect with each other.*

*Connect with the community.*



from Bob Wagner

**Calvary United Methodist Church has enjoyed several methods for observing Communion in worship.**

**Unfortunately, the impact from COVID has caused Calvary to refrain from the use of Intinction due to health concerns.**

**Recently, the majority of our Communion services have utilized the distribution of the Communion elements in the pews (do you remember the significance of “pews” from last week?). However, a favorite method of sharing the elements for Pastor Nova is at the Communion Rail. What is the purpose/significance of this wooden rail that make it so special for Communion?**

**It holds both a practical and symbolic meaning.**

**As a Place for Communion: The Communion rail is where people come forward to receive Communion—the bread and wine that represent the body and blood of Jesus Christ. It is a place of Reverence and Respect: Attendees are invited to kneel (if able) or stand allowing for an atmosphere that shows humility, prayerfulness, and respect for God. It’s a physical way of expressing devotion.**

**The rail is a division Between Sacred Spaces: In most Sanctuaries, the rail often marks the division between where the congregation sits and where the altar is placed. This highlights the holiness of the altar area without completely separating people from it.**

**Invitation, Not Separation: While it marks a boundary, it also invites believers forward—to come closer to God, especially during worship and Communion.**

**Unity in Worship: People kneel or stand side by side at the rail, symbolizing unity as they share in the same sacrament together.**

**In short, the Communion rail represents reverence, access to the body and blood of Christ, and the connection between God and the congregation.**

**May 10, 2026**

**9:15AM ~ Sunday School**

**10:30AM ~Mother’s Day  
Worship Service**

**Pastor Nova, preaching**

*May 31, 2026*

*Pastor Nova’s*

*Going Away Party*

*Thank  
you,  
mom*

**CHURCH SERVICES AND HOURS**

1ST SUNDAYS- COMMUNION SUNDAY

ALL SUNDAYS 10:30 AM - WORSHIP SERVICES

(September-May)

SUNDAY SCHOOL 9:15 AM ALL AGES (September-May)

SUMMER WORSHIP TIME: 9:30 AM

(June- 1st Sunday of September)

3RD SATURDAY, 9-11 AM - MIFFLIN FOOD PANTRY AT ZION

4TH SATURDAY 5-6:30 PM -DINNER CHURCH AT ZION

ESL- FOR INFO PLS CALL PASTOR NOVA



**Happy  
Mother’s  
Day**

**BLESSED BONDS**

**Next Lunch will be  
Wednesday, May 13,  
11:30 AM at Paolo’s  
Lancaster Pike**

### Faith & Facts Cards

Throughout its history, the Methodist Church has sought to live out the gospel not only in personal faith, but also in the way we engage the world around us. As part of the United Methodist Church, we are guided by Scripture, tradition, reason, and experience as we seek to respond faithfully to the social issues of our time. These matters can be complex and, at times, challenging, yet our calling remains the same: to love God, to love our neighbors, and to seek justice with humility and grace. This message is offered to help clarify how our church understands and approaches social and public concerns, and how our faith shapes these conversations. The Faith and Fact cards will be part of a series that will be published in Calvary Connection over the next couple months. They will be located on the last pages of the newsletter.

**Issue Covered: Worker Justice**



04 – Elsie Miller  
04 – Darla Wagner  
06 – Tony Tomczak  
06 – Quinn Raszkievicz  
10 – Tamara DeLoretta

Exciting new opportunity to serve!



Calvary has officially partnered with Opportunity House to begin serving meals on a quarterly basis. If you are feeling called to help with his ministry, please contact Jen Raszkievicz. Usually, groups between four and eight people work well for meal prep/serving.

Following dates open to serve:

June: 6, 12, 15, 16, 19, 21, 28, 29, 30

September: 3, 6, 7, 11, 15, 19, 21, 29

December: 5, 7, 11, 15, 18, 20, 21, 24, 27, 29, 30, 31



**Are you above 50? Want to find a way to keep busy?**

**MOHNTON'S LEAGUE OF GOLDEN AGERS is for you!**

**Meetings are at 10AM on the 2<sup>nd</sup> and 4<sup>th</sup> Monday's**

**Zion E.C Church**

**57 North Church Street Mohnton**

**(meeting room is in the basement)**

**\*Information Meetings \* Food and Parties \* Entertainment**

**Bus Trips Several Times a Year Including a Multi-Day Trip**

**If you are interested, contact Dottie at 610-914-9760 for meeting information or Roxi at 610-334-4084 for trip information.**

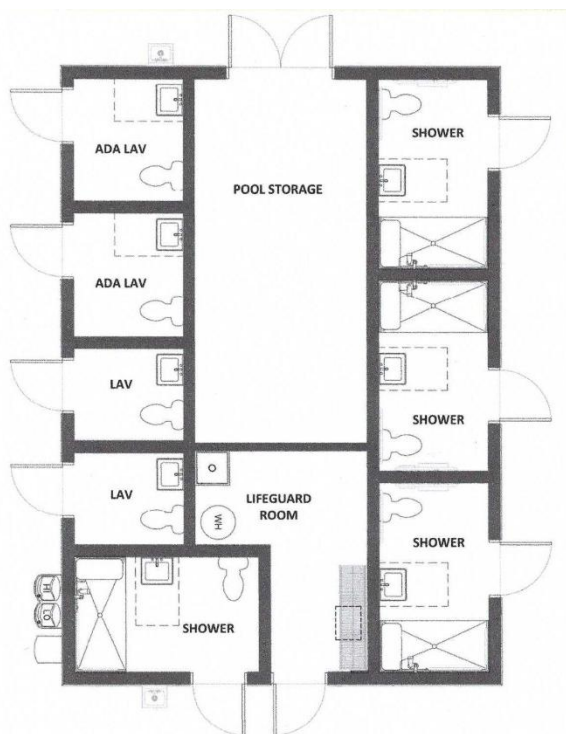


**Gretna Glen Camp and Retreat and Center**  
God's Place Apart. Transforming Lives.

A new facility to replace our current pool shower house, built in 1968, is designed for year-round use, providing comfort, accessibility for campers and retreat guests in all seasons.



New Meadow Restrooms



Please help this important ministry of our church to accomplish this project. Send your gift to Gretna Glen indicating Meadow Restrooms on your check, or by handing it to Carol Adams.



**SUSAN ADAMS VATTIMA ....**

is searching for a kidney donor. She has been found to have the same genetic disease as her sister, Jeanne, and is ready for transplant. She is the daughter of Jim and Carol Adams. Potential donors of any age or location are sought.

To learn more, please read and share this link:  
<https://nkr.org/GKT864>  
Thank you!

**From Pastor Nova's Message 4/26/26**

Creation Waits for the Children of God  
Paul says creation waits for the children of God to be revealed.

Creation is waiting for believers to live with prayer, compassion, and care.

The world does not need more careless people. It needs visible children of God.

People who bring healing, wisdom, mercy, and hope.

Romans says creation is groaning.

The earth is responding like wounded things respond.

When rivers are poisoned, they groan.

When forests disappear, they groan. When communities suffer and hearts grow cold, society groans. But groaning is not meaningless noise.

Groaning is the language of longing.

A mother groans in labor because life is near. Creation groans because renewal is coming.

God who hears creation's groaning also heard His Son on the cross. Jesus entered our brokenness, carried it, and redeemed it. If Christ can turn a cross into salvation,

He can turn repentance into renewal. He can turn stewardship into healing and small acts into

transformation. The world may not need louder opinions. It needs quieter faithfulness.

A planted tree. A restored stream. A grateful child. A generous church. One day creation will groan no more.

One day all things will be made new.

Until then—Notice the beauty.

Face the brokenness. Live the hope.

And become part of the healing. In the name of the Father, and the Son, and the Holy Spirit. Amen.



One West Wyomissing Avenue  
Mohnton, Pa. 19540

610-777-8552  
610-777-3181(fax)

**ASSISTANT DIRECTOR JOB DESCRIPTION- at least two years of experience in a licensed childcare environment. Must have an associate or bachelor's degree in early childhood education or another educational field.**

**Job Summary:** Provide a safe learning environment and quality education program for children. Responsible for effective operation of the child development center in the absence of the director, managing staff, and providing ongoing communication with parents.

**Essential Functions/Job Responsibilities:**

- Assists the director in establishing an environment focused on quality, safety, and education by ensuring proper implementation of curriculum and maintaining the integrity of the program.
- Communicates clearly, concisely, and accurately with parents, staff, and church personnel in order to ensure effective operations of the center.
- Manages the center in the absence of the director to comply with all federal, state, and company policies, procedures, programs, and processes.
- Assists the director in planning work schedules, supervising staff, and assisting in lesson planning.
- Assisting the director in ensuring appropriate teacher-child ratios and minimum state teacher qualifications are met.
- Accurately maintains required records of all enrolled children.
- Effectively resolves problems related to the operations of the center as directed by the director.
- Attends all staff meetings, training sessions, meetings and programs as requested by the director.
- Ensures the center provides a safe and healthy environment by conducting frequent walk-throughs.
- Inventory supplies and report information to the director so that additional supplies can be ordered.
- Takes on specific responsibilities and/or projects as needed and delegated by the director including covering in classrooms.

**Skills and Abilities:**

- Demonstrates integrity, honesty, and professionalism
- Ability to problem solve and manage conflicts
- Strong communication skills, both verbal and written
- Excellent customer service skills
- Ability to meet deadlines
- Ability to work a flexible schedule consistent with the hours of operation, and the ability to adapt hours to the needs of the business
- Proficient in basic computer skills, including Microsoft Office
- Commitment to complete annual state licensing training requirements
- Ability to balance multiple priorities

**Qualifications:**

- Experience as an assistant director in a licensed childcare facility
- Previous supervisory experience
- Must have or be able to obtain CPR, Fire Safety, and any other training required by regulatory agencies
- Knowledge of childcare licensing laws
- Knowledge of early childhood curriculum

# WORKER JUSTICE

## FAITH & FACTS

### ECONOMIC, HEALTH, AND GENDER JUSTICE

#### What does the Bible say?

Woe to him who builds his house by unrighteousness and his upper rooms by injustice; who makes his neighbors work for nothing, and does not give them their wages.

**(Jeremiah 22:13)**



You shall not withhold the wages of poor and needy laborers, whether other Israelites or aliens who reside in your land. **(Deuteronomy 24:14)**

Listen! The wages of laborers who mowed your fields, which you kept back by fraud, cry out, and the cries of the harvesters have reached the ears of the Lord of hosts. **(James 5:4)**

#### What does the United Methodist Church say?

We believe in the right and duty of persons to work for the glory of God and the good of themselves and others and in the protection of their welfare in so doing; in the rights to property as a trust from God, collective bargaining, and responsible consumption; and in the elimination of economic and social distress. **(¶164 Our Social Creed)**



In response to the increasing globalization of the economic system, the widening disparity between rich and poor, and attempts to deprive workers of their fundamental rights, the church reaffirms its position in support of workers and their right to organize. **(2020/2024 Book of Resolutions, #2211, Rights of Workers)**

The United Methodist Church supports the conventions of the International Labor Organizations that advance safety in the workplace; freedom from bonded or forced labor; the elimination of discrimination in respect to employment and occupation; effective abolition of child labor; fair compensation; just supervision; and the right of collective action for employees in all nations. **(2020/2024 Book of Resolutions, #2211, Rights of Workers)**



**CHURCH & SOCIETY**

The United Methodist Church

Living **IN** Faith Seeking **JUSTICE** Promoting **PEACE**

# WORKER JUSTICE

## FAITH & FACTS

### ECONOMIC, HEALTH, AND GENDER JUSTICE

#### What do the facts say?

- There are 168 million child laborers worldwide and 21 million people coerced into forced labor.<sup>1</sup>
- Globally, 59% of work is paid, while 41% of work, mostly inside the home, is unpaid. While the men's share of paid work is nearly twice that of women, women perform three times as much unpaid work as men.<sup>2</sup>
- According to the International Labor Organization, there are 150.3 million migrant workers worldwide.
- Over 800 million working poor live on less than \$2 (US dollar equivalent) per day.<sup>3</sup>
- In the United States, chief executives of major companies make over 300 times that of their average worker, a six-fold increase from 1980.<sup>4</sup>
- Among the most developed economies, the average percentage of workers belonging to a union is 16.7%, down from 34% in 1980.<sup>5</sup>



<sup>1, 2</sup> United Nations Development Programme, <sup>4</sup> AFL-CIO, *Wall Street Journal*, <sup>5</sup> OECD

#### What do you say?

##### Take **ACTION** for justice...

- **Find out** if your local church has adopted a living wage model for its entire staff.
- **Learn more** about active campaigns through our partners at National Farm Worker Ministry ([nfwm.org](http://nfwm.org)).
- **Support** companies that pay workers a living wage and respect their voice in the workplace. Purchase fairly traded products through cooperatives such as Equal Exchange ([equalexchange.coop](http://equalexchange.coop)) and find out how consumers and shareholders are advocating for human rights through the Interfaith Center for Corporate Responsibility ([iccr.org](http://iccr.org)).
- **Advocate** for workers' rights and fair pay. Support worker-led initiatives to increase minimum wage laws, pass living wage initiatives, and protect the right to organize and bargain collectively.



For more information contact:  
[advocacy@umcjustice.org](mailto:advocacy@umcjustice.org)

[www.umcjustice.org](http://www.umcjustice.org)

Updated 2025

#### General Board of Church and Society

100 Maryland Ave, NE Washington, DC 20002  
© 2022 General Board of Church and Society of  
The United Methodist Church

## June 14th ~ Graduation Sunday

Attention all grads (or parent(s) of soon-to-be grads) from any degree/certificate program, please complete the form below so we can celebrate your achievements!

The following information is requested so that it may be included in the *Calvary Connection*.

[Parents of graduates are welcome to relay this information to the church office.]

Graduate's name:

\_\_\_\_\_

Degree (college/graduate school only)

\_\_\_\_\_

\_\_\_\_\_

Date of graduation: \_\_\_\_\_

Awards, honors, scholarships: \_\_\_\_\_

\_\_\_\_\_

\_\_\_\_\_

Future school or career plans: \_\_\_\_\_

\_\_\_\_\_

Other information you would like to share:

\_\_\_\_\_

\_\_\_\_\_

\_\_\_\_\_

\_\_\_\_\_

**DEADLINE: Sunday, May 31<sup>st</sup>, 2026**

**Please email this information  
to the church office**

**at [administrator.calvmohn@comcast.net](mailto:administrator.calvmohn@comcast.net)**

**OR complete the form and mail it to the**

**church office: Attn: Scott Piergrossi,**

**1 W. Wyomissing Avenue,**

**Mohnton, PA 19540**



## Teatime treat



Make these sweet sandwiches  
for a Mother's Day tea party.

### What you need:

- 4 oz. cream cheese, softened
- 1 cup heavy cream
- 3 Tablespoons powdered sugar
- 1 teaspoon lemon juice
- 6-10 strawberries, washed and sliced
- 6 slices of white bread
- Cellophane
- Adult help



### What you do:

1. With an electric mixer, whip the cream cheese in a bowl until fluffy.
2. Add cream, powdered sugar, and lemon juice. Continue whipping on high speed until mixture is stiff.
3. On each slice of bread, spread a layer of the mixture. Then arrange some sliced strawberries on top.
4. Place the sandwiches together, with filling on the inside.
5. Wrap tightly in cellophane. Chill for two hours so the filling sets.
6. Trim off crusts with a serrated knife. Cut sandwiches in squares or triangles. Serve and enjoy!

